


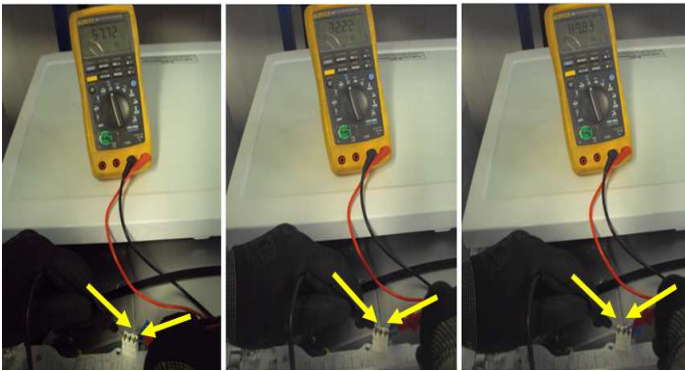
arçelik	PART - GROUP CHANGE NOTIFICATION				Bulletin no	2015-K04	Date	06.07.2015
	Prepared by	Onur ERCAN			Signature			
	Approved by	Banu Erdem Çakıcı			Rev :00			
	Copy to	THD	✓	KMİ - ÜPB	✓	KMİ - MÜT	KMİ - KGB	✓
	Customer							

#### TECHNICAL EXPLANATION OF THE CHANGE

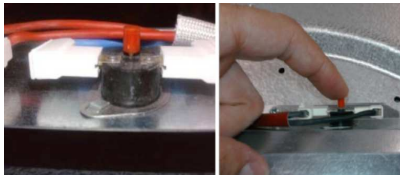
Issue	NTC improvement of Ares dryers
Explanation	<p>NTC type was changed to prevent getting humidity into the NTC and isolation problems.</p>  <p>The new NTC has integrated cable. The new heater with the new NTC is interchangeable with old types.</p> <p>For the compliant about not drying/insufficient drying performance, please check the heater according to below controls and if it fails use the new heater. If there is no any problem with the PCB (check it during service test), the PCB should not be changed.</p> <p>Affected models and revision details are given below</p>

#### HEATER CONTROLS

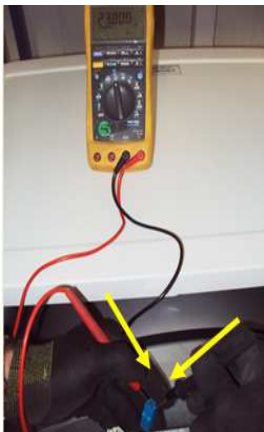
- Check the heater resistances values of low/high/total heaters from the sockets. (The heaters can be also checked during service test)



- Check the thermostat from the terminals. If manual resetting thermostat is open circuit, the button is up and the heater does not work. Then push the button down, and measure the thermostat to be sure that it is short circuit.



- Check the NTC's resistances value from the sockets. The unit of the resistance should be **kOhm**. The value depends on the temperature of the environment or the machine.



- Check the resistance value between NTC and housing from the socket, It should be open circuit.



INFORMATION ABOUT THE PART CHANGES				
PART NAME	STOCK NUMBER ACCORDING TO PRODUCTION DATE			CODE
	..... - 12.2013	01.2014 - 05.2015 <i>starting serial numbers for 7182681500 14-200864-01</i>	06.2015 - .....	
HEATER	2970101500			-
MAIN PCB	2963283001	2963283002	2970010901	B2
<b>CODE EXPLANATION :</b>				
A-Old stocks can be used; Old & new parts are fully interchangeable				
B-Old stocks can be used; Old parts are interchangeable with old productions & new parts are interchangeable with new productions				
C-Old stocks can not be used. New parts are interchangeable with old & new productions				
D-Old stocks can not be used. New parts are interchangeable with new productions				
E-Old stocks can be used; Old parts are interchangeable with old productions & new parts are interchangeable with both old and new productions				
1-Performance / 2-Production improvement / 3-Safety / 4-Material or Qty./dimension change / 5-Additional part / 6-Part cancellation / 7-Alternative use				
INFORMATION ABOUT THE PRODUCT CHANGES				
Stock Number	Model			
7188631300	BEKO DCU7230B-ING S2 CNDU S B10			
7188631200	BEKO DCU7230S-ING 63 CNDU S B10			
7182681500	BEKO DCU7230W-ING B1 CNDU S B10			