

■ Tam bandajlama (Full bandage)
 ▨ 5-6 mm aralıklı bandajlama (5-6mm intermitent bandage)

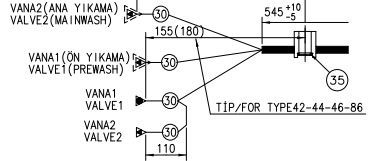
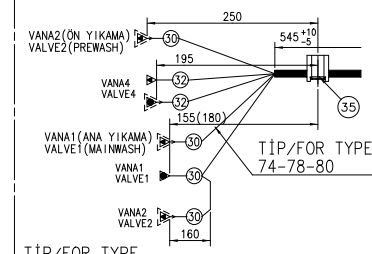
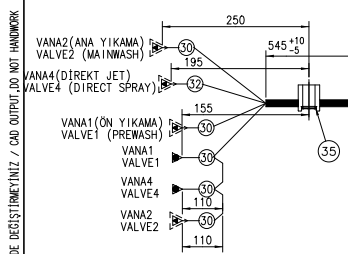
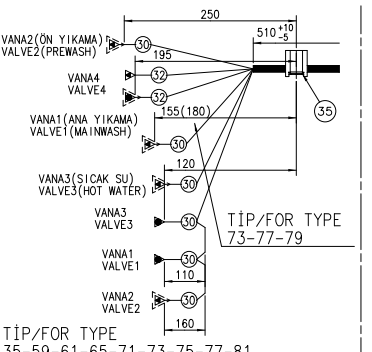
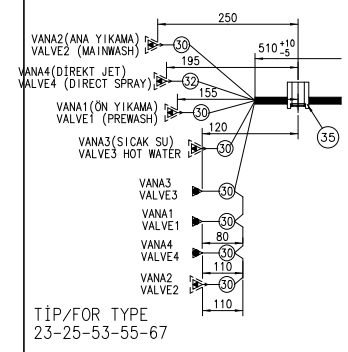
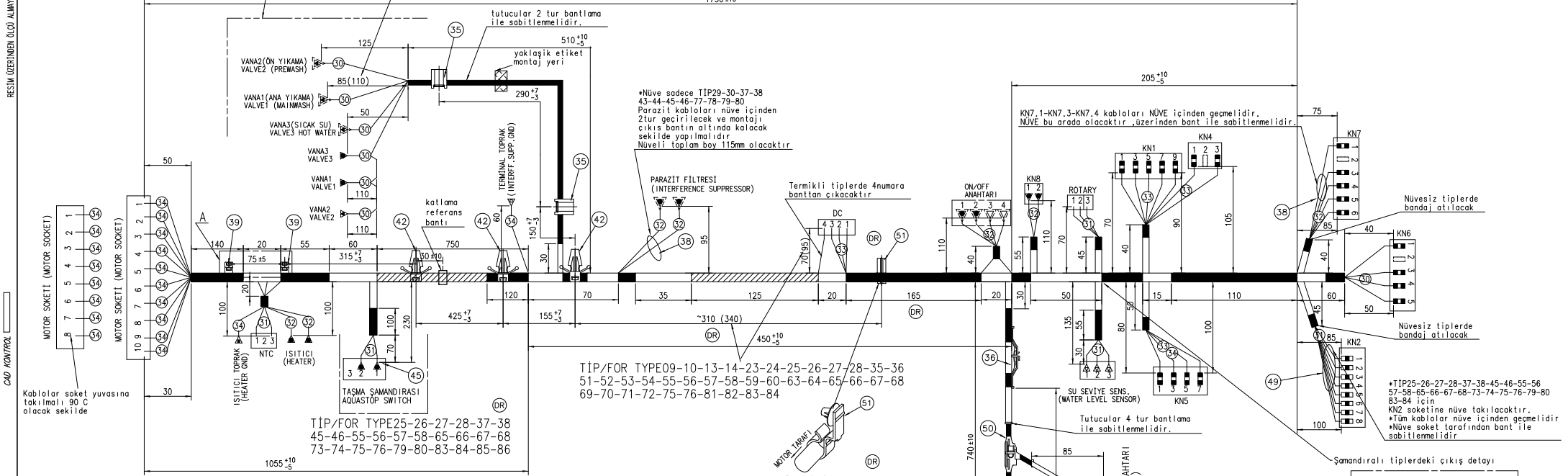
TİP/FOR TYPE07-09-13-21-27-29-37-39

41-43-45-51-57-63-69-83-85 DR

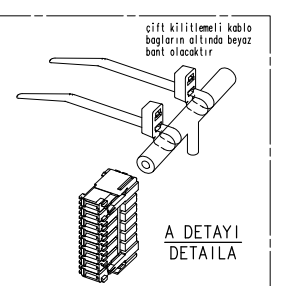
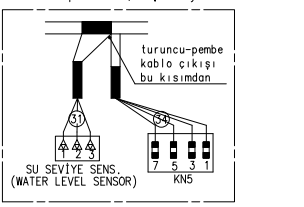
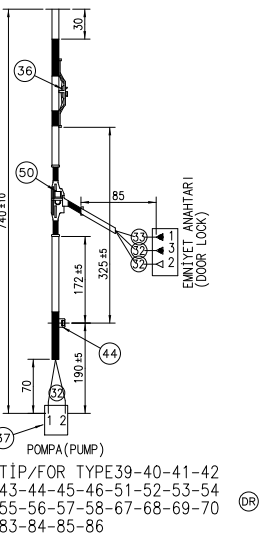
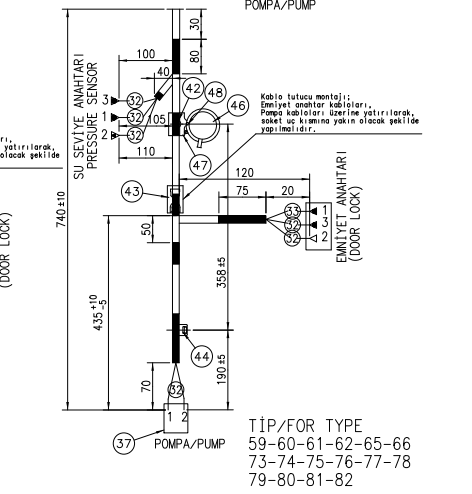
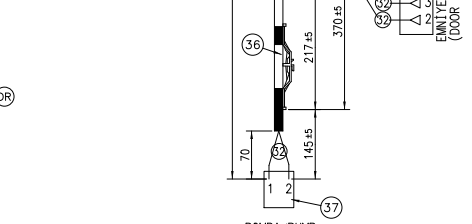
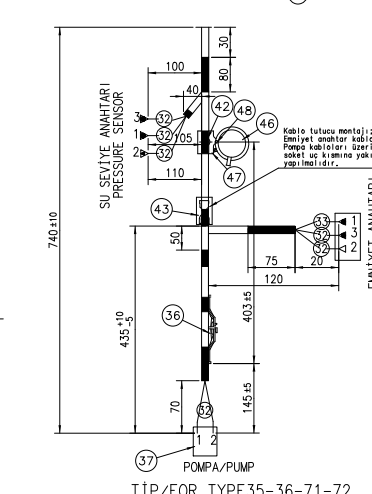
TİP/FOR TYPE41-43-45-85

1730±10

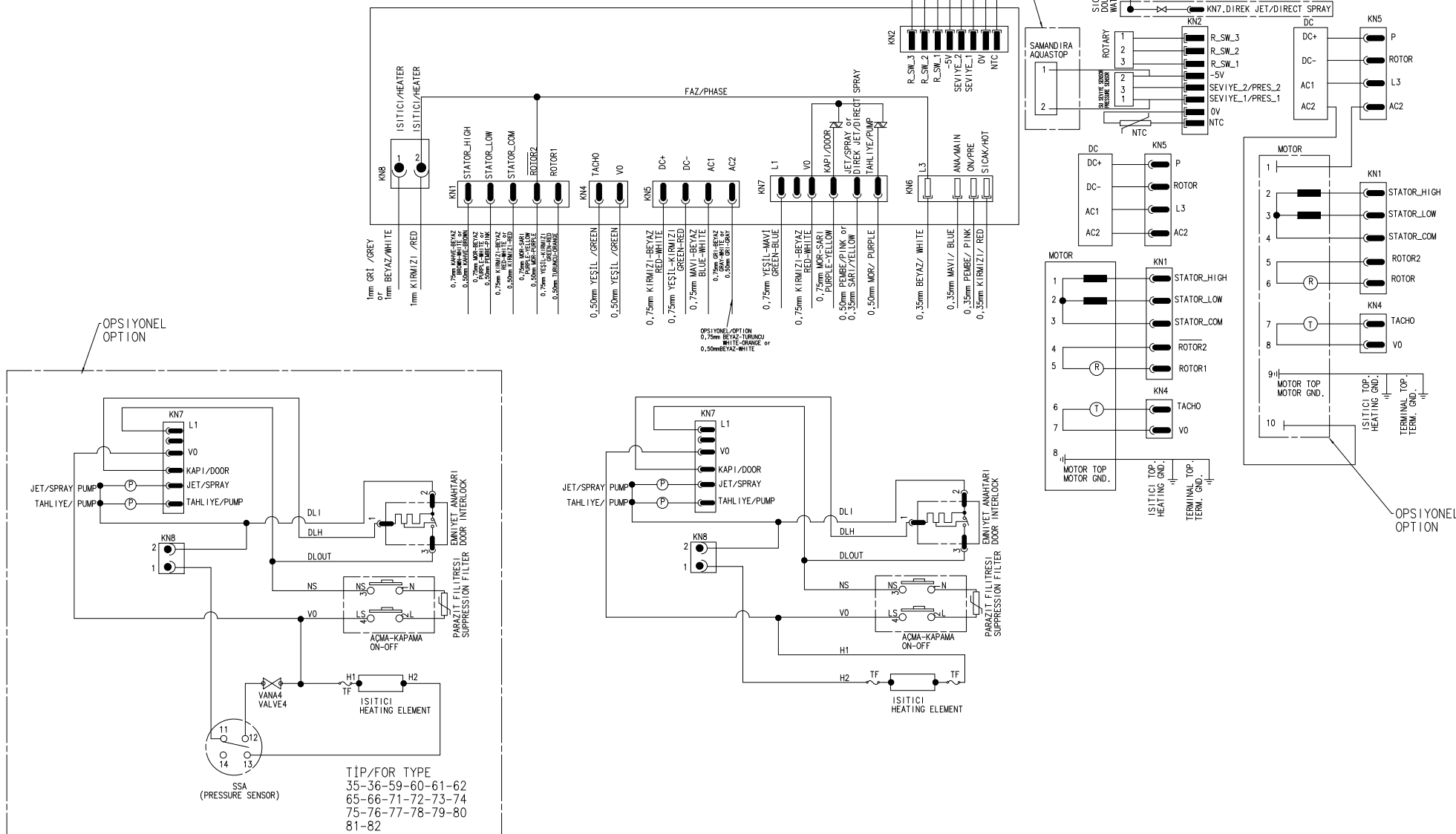
TİP/FOR TYPE07-08-09-10-13-14-21-22-23-24-25-26-27-28-29-30-35-36-37-38-39-40-41-42-43-44-45-46-51-52-53-54-55-56-57-58-59-60-61-62-63-64-65-66-67-68-69-70-71-72-73-74-75-76-77-78-79-80-81-82-83-84-85-86 DR



TİP/FOR TYPE08-10-14-22-28-30-38-40-42-44-46-52-58-64-70-84-86 DR



02/01 Tip Malzeme Renk Standart Ölçü		arçelik		MALZEME/MATERIAL	
TARİH	İSİM	ANA KABLO GR			
13.01.2009	ÖZLEM	MAIN CABLE HARNESS			
13.01.2009	FARUK	TRVO/1/2/MED/UN-JUN/NCR-COMP.			
13.01.2009	PARMAKSIZ	DIFFUSION/FUSION MINI LCD			
TOLERANS		KONTROL		RESİM NO.	
Verilmeyen Ölçü (DIN)		No.Sınıflı Komp. Sıra No		Tip İst. Değ.	
+10 / -5		287580XX00		Sayı: 2	
YERİNE GEÇTİ		YERİNE GEÇTİ		YERİNE GEÇTİ	



ÖZ01	Tip	Malzeme	Renk	Standart	Ölçü
arçelik					
				MALZEME/MATERIAL	
				ANA KABLO GR.	
				MAIN CABLE HARNESS	
				TRPO-1/2/ANMİLİM-JUINOR-COMP.	
				DİŞİREK/DEFLECTION WITH LCD	
				(OEWRE SEMASI/ELECTRICAL SCHEMA)	
				RESİM NO.	
				ÖLÇEK	
				-	
				Toleransi	
				Kontrol	
				İçölçüleri	
				M. Simil	
				Komp. Stroj No	
				Tip	
				St. Değ.	
				sayı no.	
				VERİNE GEÇTİ	
				Tarih	
TIP	D.B.	D.T.NO	TARİH	D.YAPAN	ONAY