

Programme takes too long.
*Machine does not end the programme
*Machine does not take in water.
*Machine does not function.
*It does not spin and drain
*Machine drains continuously.

E8
0
1
0
0
0

we have a video in the description to assist you with working out your error code



MORE VIDEOS ON THIS IN DESCRIPTION

*No water or
*Valve triac open or
*Pump triac short circuit error

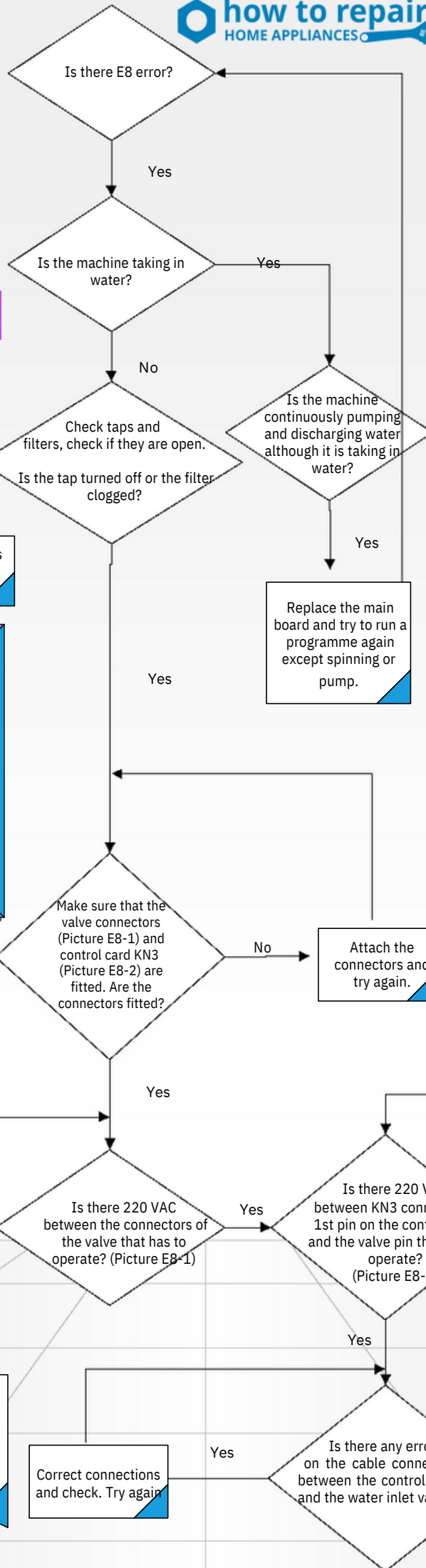
Turn the taps on and try again.

PICTURE E8-1: AC voltage is being measured over valve connectors



MORE VIDEOS ON THIS IN DESCRIPTION

we have a very detailed video on how water valves work electronically



PICTURE E8-2: KN3 connector on the card



INFORMATION: Main wash pin 4 blue
Prewash pin 5 yellow

PICTURE E8-3: AC voltage is being measured over valve connectors (KN6 - KN3)



we put a lot of work into all our information so please subscribe to the Channel

SUBSCRIBE



Important Note:

In the softener step prewash and main wash valves are activated together. Thus, water is sent to softener compartment.



how-2-repair.com

Please use the Ask paul a question page if you need help and i will repl...
youtube.com